



Foshan Perseverance Precision Equipment Co.Ltd

E-mail: bob@ppefs.com

Telephone: +86 757 8666 5257

Call phone: +86 0 139 2999 0893

Web site: <http://ppefs.com>

Address: No.33, Hengxing North Road, Shishan Town,  
Nanhai District, Foshan City, Guangdong Province, China



**FOSHAN PERSEVERANCE  
PRECISION EQUIPMENT CO.LTD**

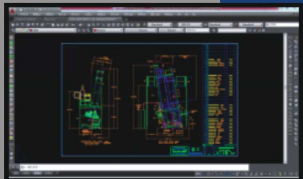
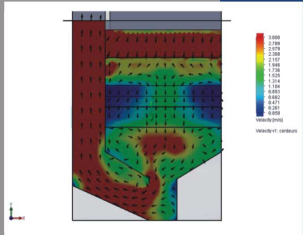
## Engineering And Design

PPE Foshan is a custom industrial fabrication company. We specialize in the metal container industry, with a majority of our focus on aluminum and steel beverage can process equipment.

our products is the fact that we produce officially licensed machinery. Our Washer was developed using official PPH designs and technology. Our ovens are also produced with officially licensed designs. Our systems employ proven designs with modern, cost saving technology.

We also perform full rebuilds and retrofits to existing production machinery.

Our equipments can be found in many of the largest most technologically advanced facilities on the planet.

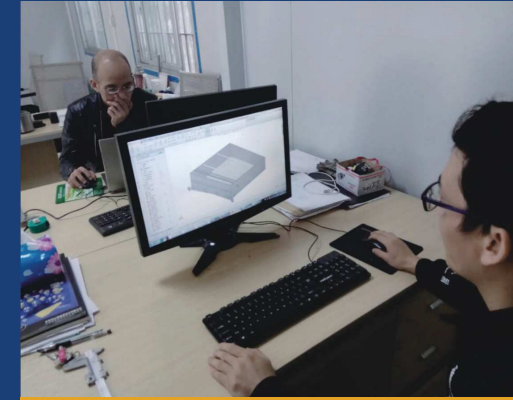


## Our Certifications

PPE holds a number of certifications and approvals that demonstrate our uncompromising commitment to providing the highest quality products and services to our clients.

## Our People

We are a growing, full-service manufacturing company with many highly-skilled employees specializing in drafting, design, engineering, fabrication, welding, and project management.



## Equipment Retrofits And Upgrade

PPE stays current with new technology, we are able to suggest economical upgrades and retrofit to your equipments that will jump start your ROI and efficiency

- Mechanical System Redesign & Retrofit
- Washer spray Unit Replacement
- Pumping & Piping Systems
- Custom Air Handler Retrofits for oven
- Convey system upgrade
- VFD Design, Installation, & Upgrades







## Can Washers

- 1 With the re-introduction of the F-Series Washer, the PPE Foshan System has been re-engineered and improved to optimize process control, ease of installation, operation and maintenance.

- 2 The PPE washer maintains precise chemical balance, providing more consistency in can quality.
- 3 Our system also includes a highly efficient Dry-off Oven, achieving a 95% recirculation rate.





## Pin Ovens

- 1 As part of our industrial oven lineup, PPE Foshan also offers officially licensed Pin Ovens. Our Pin Ovens have been designed to maximize efficiency and reduce operating costs.

The PPE Pin Oven utilizes a unique recirculation system, allowing less passes to cure inks than competing ovens. We also implement a newly designed Pin Chain Structure which occupies less space than previous designs.

- 2 In addition to maximizing efficiency, these design features also reduce the overall size and cost of our system.



## IBO Advantage

- ① Burn households using the latest air knife design, drying faster, energy-saving effect is obvious;
- ② 100mm male and female inlaid insulation board structure, interior filled with environmentally friendly insulation materials to ensure the insulation effect;
- ③ Multi-point adjustable out of the wind groove design, to achieve accurate furnace cavity balance;



- ④ Allen-Bradley / FIFE / SAINT GOBAIN / MAXON / HONEYWELL / HALIFAX other world-renowned brands such as component configuration, high reliability;
- ⑤ Both sides of the furnace equipped with automatic pressure relief valve, at the same time as a maintenance channel;





## Coolant Filtration Systems

PPE Foshan builds an officially licensed Coolant Filtration System. As an alternative to the “pressure plate” design, the PPE Foshan system utilizes two pressure vessels for the filtering process. The “pressure vessel” design has shown increased efficiency and has become the industry standard. The dual pressure vessels work in conjunction by equally sharing filtration duties. When the active vessel becomes full of contaminant the system automatically diverts flow to the inactive filter which is waiting with clean filter media.

The pressure vessel design eliminates down time associated with filter changes and significantly reduces operator input.





## Conveyor

PPE Foshan offers a wide range of conveying options. All of our conveying systems are officially licensed designs. We offer conveying systems and devices to meet endless design specifications. PPE Foshan will equip your conveying with any mat you choose. To increase cost savings to our customers, we have also qualified a number of reliable mat suppliers within China. Offering a cost effective and reliable alternative to western mat manufacturers has been a consistent request from our customers.



Examples of Conveying Systems and Devices by PPE Foshan:

- Straight Conveying
- Up Enders
- Accumulation Tables
- Complete Conveying and Line Control Systems
- Elevators/Lowerators
- Vacuum/Magnetic Transfers
- Single Filers



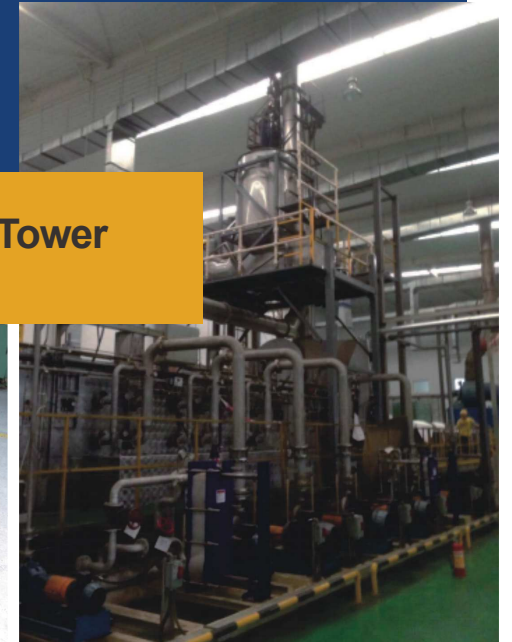




As parts of our equipment, we also provide washer exhaust acid mist neutralizing tower and decorator/base coat mist collector. The Neutralizing tower equipped with monitor, automatic add chemicals and water, achieve AUTO.



PPE MIST COLLECTOR use AAF filter for each suction duct to separate the inks.



## Chemical Absorption Tower





# Spare And Replacement Parts

PPE are specialized in providing wide range of high quality Spare and Replacement Parts, 100% Brand New and Original guaranteed.

Our cooperative suppliers:



## Our Main Customers:



# PPE/PPH Manufacturing Records

## PPE/PPH WASHER TRACKING RECORD

| Customer                   | Machine capacity     |
|----------------------------|----------------------|
| UAC Saudi Arabia           | 3000 cpm Washer      |
| PCC Shengyang              | 5000 cpm Washer      |
| PCC Qindao                 | 4000 cpm Washer      |
| PCC Wuhan                  | 4000 cpm Washer      |
| PCC zhanzhou               | 3000 cpm Washer      |
| Rexam Jacarei Brazil       | 4000 CPM Washer      |
| Rexam Jacarei Brazil       | 3000 CPM Washer      |
| Rexam BCSA Brazil          | 2000 CPM Washer      |
| Rexam Chile                | 4000 CPM Washer      |
| Bao Steel Wuhan            | 1800 CPM Washer      |
| Gaosen Shangdong           | 1800 CPM Washer      |
| Gaosen Shangdong           | 2000 CPM Washer      |
| Gaosen Shangdong           | 3000 CPM Washer      |
| Sinowin Shengwei           | 2200 CPM Washer      |
| Sinowin Shengwei           | 2200 CPM Washer      |
| Ball Qindao                | 3000 CPM Washer      |
| Ball Vientman              | 3000 CPM Washer      |
| Ball Wuhan                 | 3000 CPM Washer      |
| Ball Foshan                | 3000 CPM Washer      |
| KIAN JOO                   | 3000 CPM Washer      |
| BALL TENNESSEE WASHER 4 FT | 1200 CPM Washer      |
| CPMC Chengdu               | 3000 cpm Washer      |
| PCC Beijing                | 1500 CPM Dryoff Oven |

## PPE/PPH IBO TRACKING RECORD

| Customer                                | Machine capacity |
|---|------------------|
| 0956 SenLi IBO                          | 2400 CPM         |
| 0961 PCC (SHENGYANG) IBO                | 2400 CPM         |
| 0965 PCC (WUHAN) IBO                    | 2400 CPM         |
| 1067 BAO STEEL IBO                      | 2400 CPM         |
| 1068 PCC (BeiJing) IBO                  | 2400 CPM         |
| 1074 Gaosen 2000cpm IBO                 | 2400 CPM         |
| 1182 KIAN JOO IBO                       | 2400 CPM         |
| 1185 PCC shengyang IBO                  | 2400 CPM         |
| 1186 PCC Zhangzhou IBO                  | 2400 CPM         |
| 1190 PCC Qingdao IBO                    | 2400 CPM         |
| 1194 REXAM VIETNAM IBO                  | 2400 CPM         |
| 11-101-PO CROWN HESHAN IBO              | 2400 CPM         |
| 11-102-IB PCC ZHANGZHOU IBO             | 2400 CPM         |
| 13-115 Lang Fang Hua Sheng 6" Panel IBO | 2400 CPM         |
| 14-124 Lang Fang Hua Sheng 6" Panel IBO | 2400 CPM         |
| 1676 CPMC Chengdu IBO                   | 2400 CPM         |

## PPE/PPH Pin Oven Tracking Record

| Customer                                     | Machine capacity |
|--|------------------|
| SCMC 2 ZONE PIN OVEN                         | 2400 CPM         |
| 0959 SenLi Pin Oven                          | 1800 CPM         |
| 1075 Gaosen 2000cpm Pin Oven                 | 1800 CPM         |
| 1183 KIAN JOO PIN OVEN                       | 2400 CPM         |
| 1193 KIAN JOO PIN OVEN                       | 2400 CPM         |
| 1197 REXAM VIETNAM PIN OVEN                  | 2400 CPM         |
| 1199 CROWN HESHAN PIN OVEN                   | 2000 CPM         |
| 11-100-PO CROWN HESHAN DECORATOR PIN OVEN    | 2000 CPM         |
| 13-116 Lang Fang Hua Sheng 6" Panel Pin Oven | 2200 CPM         |
| 13-121 GAOSEN 1800 CPM PIN OVEN              | 2000 CPM         |
| 14-123 Lang Fang Hua Sheng 6" Panel PIN OVEN | 2200 CPM         |
| 15-125 GAOSEN 1800 CPM Pin Oven              | 2000 CPM         |
| 1541 CPMC Chengdu 2000 CPM Pin Oven          | 2000 CPM         |

## PPE/PPH DCF TRACKING RECORD

| Customer                             | Machine capacity | Running conditions |
|--------------------------------------|------------------|--------------------|
| NDH Die Coolant Filter               | 16-20 BODYMAKER  | 2 lines            |
| Rexam Die Coolant Filter             | 16-20 BODYMAKER  | 2 lines            |
| Rexam Egypt Die Coolant Filter       | 16-20 BODYMAKER  | 2 lines            |
| Rexam Denmark Die Coolant Filter     | 16-20 BODYMAKER  | 2 lines            |
| SenLi Coolant Filter                 | 16-20 BODYMAKER  | 2 lines            |
| Crown Bangkadi Coolant Filter        | 16-20 BODYMAKER  | 1 line             |
| Crown Vietnam CFS                    | 16-20 BODYMAKER  | 1 line             |
| Crown HangZhou CFS                   | 16-20 BODYMAKER  | 1 line             |
| BALL(Qingdao) DCF                    | 16-20 BODYMAKER  | 1 line             |
| KIAN JOO CAN LINE CFS                | 16-20 BODYMAKER  | 1 line             |
| CROWN PUTIAN DCF                     | 16-20 BODYMAKER  | 1 line             |
| BALL VIETNAM DCF                     | 16-20 BODYMAKER  | 2 lines            |
| Crown Turkey DCF                     | 16-20 BODYMAKER  | 2 lines            |
| REXAM VIETNAM DCF                    | 16-20 BODYMAKER  | 1 line             |
| CROWN ZIYANG DCF                     | 16-20 BODYMAKER  | 1 line             |
| CROWN HESHAN DCF                     | 16-20 BODYMAKER  | 1 line             |
| Crown Malaysia coolant filter system | 16-20 BODYMAKER  | 1 line             |
| Crown Thailand coolant filter system | 16-20 BODYMAKER  | 1 line             |
| CROWN DANANG COOLANT FILTER          | 16-20 BODYMAKER  | 1 line             |
| CROWN CAMBODIA COOLANT FILTER        | 16-20 BODYMAKER  | 1 line             |
| BALL TENNESSEE COOLANT FILTER SYSTEM | 16-20 BODYMAKER  | 1 line             |